

ZNF148 Antibody



PACO01716

Product Information

Size:

50ug

Reactivity:

Human, Mouse, Rat

Source:

Rabbit

Isotype:

IgG

Applications:

ELISA, WB, IHC, IF

Recommended dilutions:

WB:1:500-1:2000, IHC:1:100-1:300,
IF:1:200-1:1000

Protein Background:**Gene ID:**

ZNF148

Uniprot

Q9UQR1

Synonyms:

ZNF148; ZBP89; Zinc finger protein 148; Transcription factor ZBP-89; Zinc finger DNA-binding protein 89

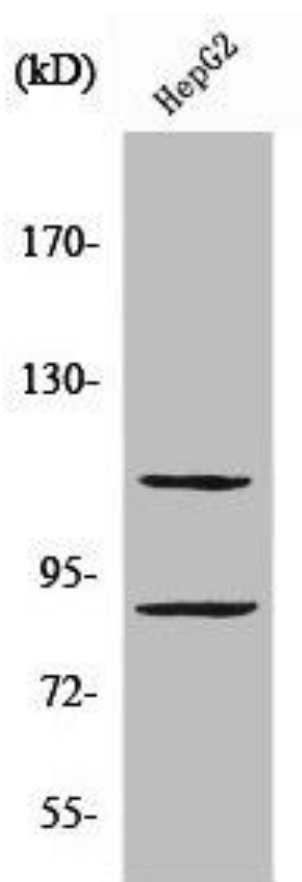
Immunogen:

Synthesized peptide derived from the N-terminal region of human ZBP-89.

Storage:

Liquid in PBS containing 50% glycerol, 0.5% BSA and 0.02% sodium azide.

Product Images



Western Blot analysis of HepG2 cells using ZBP-89 Polyclonal Antibody.