

# ZAR1 Antibody



PACO01715

---

## Product Information

**Size:**

50ug

**Reactivity:**

Human

**Source:**

Rabbit

**Isotype:**

IgG

**Applications:**

ELISA, WB

**Recommended dilutions:**

WB:1:500-1:2000

**Protein Background:**

**Gene ID:**

ZAR1

**Uniprot**

Q86SH2

**Synonyms:**

ZAR1; Zygote arrest protein 1; Oocyte-specific maternal effect factor

**Immunogen:**

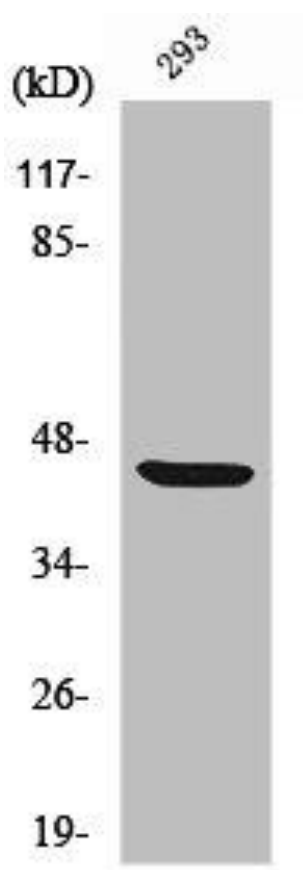
Synthesized peptide derived from the Internal region of human ZAR1.

**Storage:**

Liquid in PBS containing 50% glycerol, 0.5% BSA and 0.02% sodium azide.

## Product Images

---



Western Blot analysis of 293 cells using ZAR1 Polyclonal Antibody.