

XRCC3 Antibody



PACO01710

Product Information

Size:

50ug

Reactivity:

Human

Source:

Rabbit

Isotype:

IgG

Applications:

ELISA, WB, IHC

Recommended dilutions:

WB:1:500-1:2000, IHC:1:100-1:300

Protein Background:

Gene ID:

XRCC3

Uniprot

O43542

Synonyms:

XRCC3; DNA repair protein XRCC3; X-ray repair cross-complementing protein 3

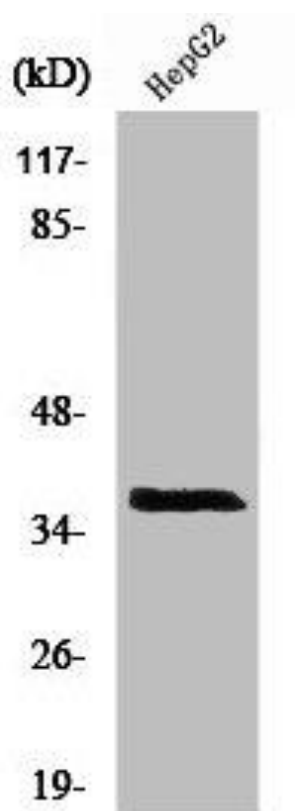
Immunogen:

Synthesized peptide derived from the Internal region of human XRCC3.

Storage:

Liquid in PBS containing 50% glycerol, 0.5% BSA and 0.02% sodium azide.

Product Images



Western Blot analysis of HepG2 cells using XRCC3 Polyclonal Antibody.