

ARHGEF3 Antibody



PACO01707

Product Information

Size:

50ug

Reactivity:

Human, Mouse, Rat

Source:

Rabbit

Isotype:

IgG

Applications:

ELISA, WB, IHC

Recommended dilutions:

WB:1:500-1:2000, IHC:1:100-1:300,
IHC:1:200-1:1000

Protein Background:

Gene ID:

ARHGEF3

Uniprot

Q9NR81

Synonyms:

ARHGEF3; Rho guanine nucleotide exchange factor 3; Exchange factor found in platelets and leukemic and neuronal tissues; XPLN

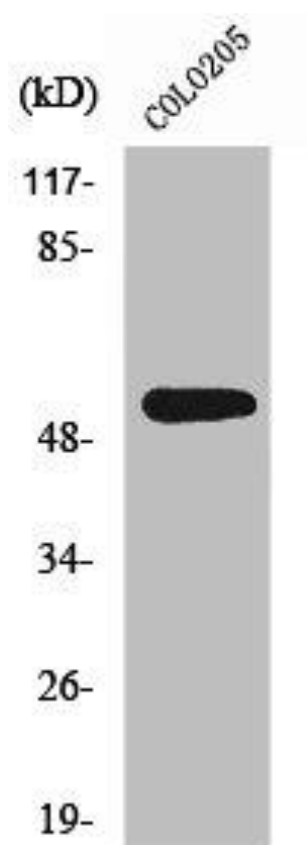
Immunogen:

Synthesized peptide derived from the C-terminal region of human XPLN.

Storage:

Liquid in PBS containing 50% glycerol, 0.5% BSA and 0.02% sodium azide.

Product Images



Western Blot analysis of COLO205 cells using XPLN Polyclonal Antibody.