

WDHD1 Antibody



PACO01701

Product Information

Size:

50ug

Reactivity:

Human

Source:

Rabbit

Isotype:

IgG

Applications:

ELISA, WB, IHC

Recommended dilutions:

WB:1:500-1:2000, IHC:1:100-1:300

Protein Background:

Gene ID:

WDHD1

Uniprot

O75717

Synonyms:

WDHD1; AND1; WD repeat and HMG-box DNA-binding protein 1; Acidic nucleoplasmic DNA-binding protein 1; And-1

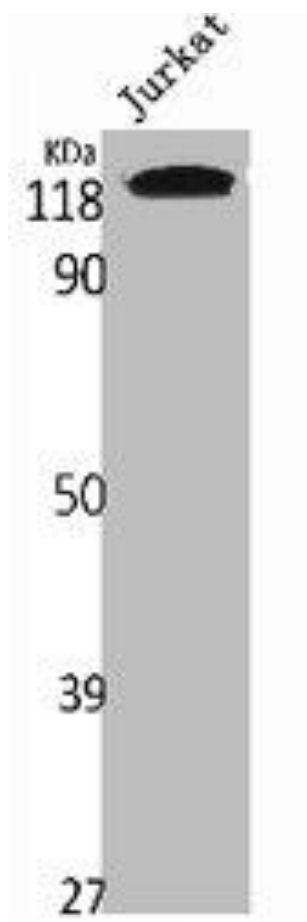
Immunogen:

Synthesized peptide derived from the Internal region of human WDHD1.

Storage:

Liquid in PBS containing 50% glycerol, 0.5% BSA and 0.02% sodium azide.

Product Images



Western Blot analysis of Jurkat cells using WDHD1 Polyclonal Antibody.