

PACO01698

---

## Product Information

**Size:**

50ug

**Reactivity:**

Human, Mouse

**Source:**

Rabbit

**Isotype:**

IgG

**Applications:**

ELISA, WB, IHC

**Recommended dilutions:**

WB:1:500-1:2000, IHC:1:100-1:300

**Protein Background:**

**Gene ID:**

WAS

**Uniprot**

P42768

**Synonyms:**

WAS; IMD2; Wiskott-Aldrich syndrome protein; WASp

**Immunogen:**

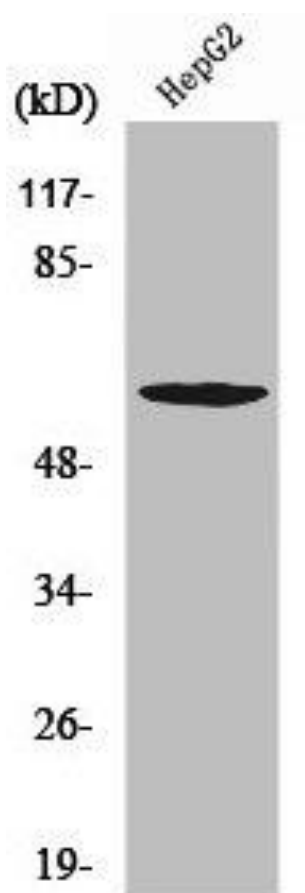
Synthesized peptide derived from human WASP around the non-phosphorylation site of Y290.

**Storage:**

Liquid in PBS containing 50% glycerol, 0.5% BSA and 0.02% sodium azide.

## Product Images

---



Western Blot analysis of HepG2 cells using WASP Polyclonal Antibody.