

# ATP6V1B1 Antibody



PACO01689

---

## Product Information

**Size:**

50ug

**Reactivity:**

Human, Mouse

**Source:**

Rabbit

**Isotype:**

IgG

**Applications:**

ELISA, WB, IHC

**Recommended dilutions:**

WB:1:500-1:2000, IHC:1:100-1:300

**Protein Background:****Gene ID:**

ATP6V1B1

**Uniprot**

P15313

**Synonyms:**

ATP6V1B1; ATP6B1; VATB; VPP3; V-type proton ATPase subunit B; kidney isoform; V-ATPase subunit B 1; Endomembrane proton pump 58 kDa subunit; Vacuolar proton pump subunit B 1

**Immunogen:**

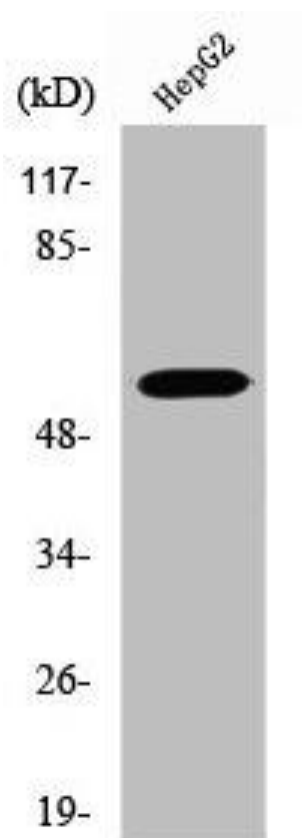
Synthesized peptide derived from the C-terminal region of human V-ATPase B1.

**Storage:**

Liquid in PBS containing 50% glycerol, 0.5% BSA and 0.02% sodium azide.

## Product Images

---



Western Blot analysis of HepG2 cells using V-ATPase B1 Polyclonal Antibody.