

# VANGL1 Antibody



PACO01687

---

## Product Information

**Size:**

50ug

**Reactivity:**

Human, Mouse

**Source:**

Rabbit

**Isotype:**

IgG

**Applications:**

ELISA, WB

**Recommended dilutions:**

WB:1:500-1:2000

**Protein Background:**

**Gene ID:**

VANGL1

**Uniprot**

Q8TAA9

**Synonyms:**

VANGL1; STB2; Vang-like protein 1; Loop-tail protein 2 homolog; LPP2; Strabismus 2; Van Gogh-like protein 1

**Immunogen:**

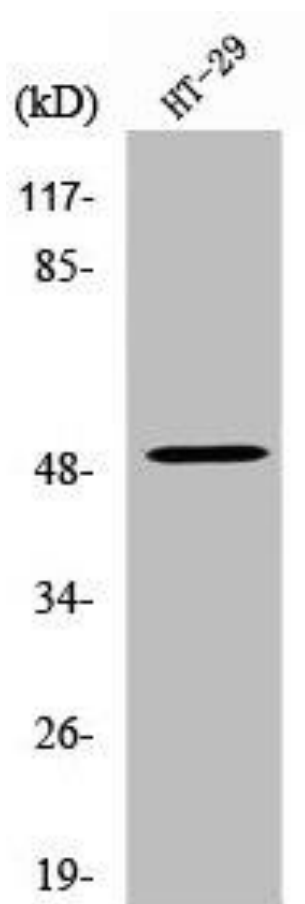
Synthesized peptide derived from the Internal region of human Vangl1.

**Storage:**

Liquid in PBS containing 50% glycerol, 0.5% BSA and 0.02% sodium azide.

## Product Images

---



Western Blot analysis of HT29 cells using Vangl1 Polyclonal Antibody.