

# USP30 Antibody



PACO01681

---

## Product Information

**Size:**

50ug

**Reactivity:**

Human, Mouse, Rat

**Source:**

Rabbit

**Isotype:**

IgG

**Applications:**

ELISA, WB

**Recommended dilutions:**

WB:1:500-1:2000

**Protein Background:**

**Gene ID:**

USP30

**Uniprot**

Q70CQ3

**Synonyms:**

USP30; Ubiquitin carboxyl-terminal hydrolase 30; Deubiquitinating enzyme 30; Ubiquitin thioesterase 30; Ubiquitin-specific-processing protease 30; Ub-specific protease 30

**Immunogen:**

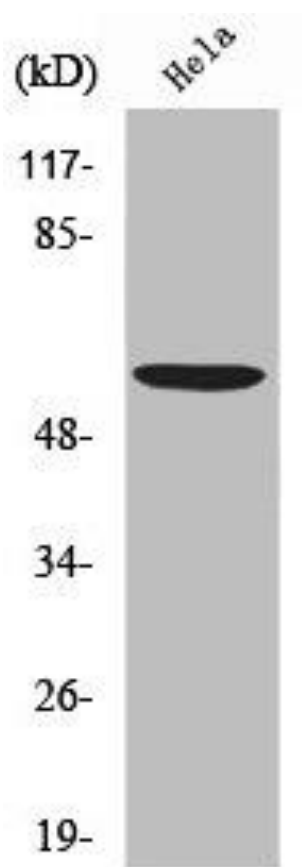
Synthesized peptide derived from the N-terminal region of human USP30.

**Storage:**

Liquid in PBS containing 50% glycerol, 0.5% BSA and 0.02% sodium azide.

## Product Images

---



Western Blot analysis of HeLa cells using USP30 Polyclonal Antibody.