

# UBE2D2 Antibody



PACO01672

---

## Product Information

**Size:**

50ug

**Reactivity:**

Human, Mouse, Rat

**Source:**

Rabbit

**Isotype:**

IgG

**Applications:**

ELISA, WB

**Recommended dilutions:**

WB:1:500-1:2000

**Protein Background:****Gene ID:**

UBE2D2

**Uniprot**

P62837

**Synonyms:**

UBE2D2; UBC4; UBC5B; UBCH4; UBCH5B; Ubiquitin-conjugating enzyme E2 D2; Ubiquitin carrier protein D2; Ubiquitin-conjugating enzyme E2(17)KB 2; Ubiquitin-conjugating enzyme E2-17 kDa 2; Ubiquitin-protein ligase D2

**Immunogen:**

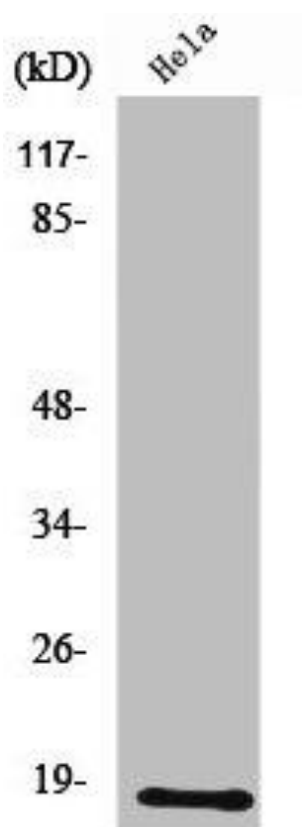
Synthesized peptide derived from the C-terminal region of human UBE2D2.

**Storage:**

Liquid in PBS containing 50% glycerol, 0.5% BSA and 0.02% sodium azide.

## Product Images

---



Western Blot analysis of K562 cells using UBE2D2 Polyclonal Antibody.