

# UBA5 Antibody



PACO01669

---

## Product Information

**Size:**

50ug

**Reactivity:**

Human, Mouse, Rat

**Source:**

Rabbit

**Isotype:**

IgG

**Applications:**

ELISA, WB, IHC

**Recommended dilutions:**

WB:1:500-1:2000, IHC:1:100-1:300

**Protein Background:****Gene ID:**

UBA5

**Uniprot**

Q9GZZ9

**Synonyms:**

UBA5; UBE1DC1; Ubiquitin-like modifier-activating enzyme 5; Ubiquitin-activating enzyme 5; ThiFP1; UFM1-activating enzyme; Ubiquitin-activating enzyme E1 domain-containing protein 1

**Immunogen:**

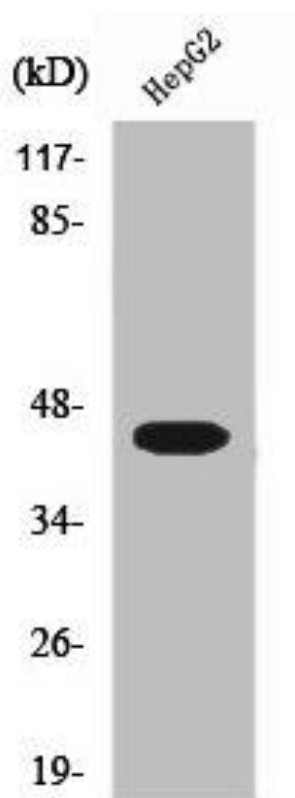
Synthesized peptide derived from the C-terminal region of human Uba5.

**Storage:**

Liquid in PBS containing 50% glycerol, 0.5% BSA and 0.02% sodium azide.

## Product Images

---



Western Blot analysis of 293 cells using Uba5 Polyclonal Antibody.