

# OXER1 Antibody



PACO01614

---

## Product Information

**Size:**

50ug

**Reactivity:**

Human

**Source:**

Rabbit

**Isotype:**

IgG

**Applications:**

ELISA, WB, IHC, IF

**Recommended dilutions:**

WB:1:500-1:2000, IHC:1:100-1:300,  
IF:1:200-1:1000

**Protein Background:****Gene ID:**

OXER1

**Uniprot**

Q8TDS5

**Synonyms:**

OXER1; GPR170; TG1019; Oxoeicosanoid receptor 1; 5-oxo-ETE G-protein coupled receptor; G-protein coupled receptor 170; G-protein coupled receptor R527; G-protein coupled receptor TG1019

**Immunogen:**

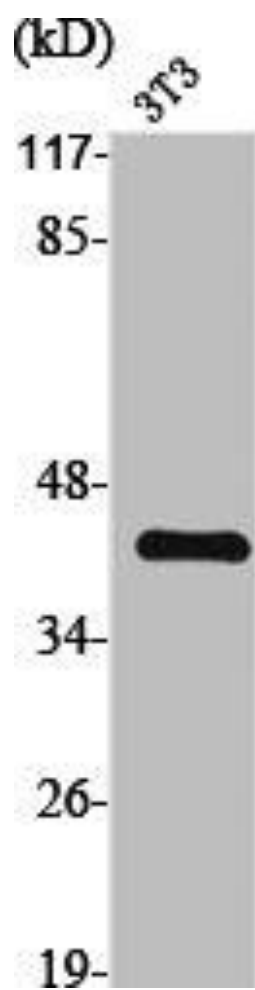
Synthesized peptide derived from the Internal region of human TG1019.

**Storage:**

Liquid in PBS containing 50% glycerol, 0.5% BSA and 0.02% sodium azide.

## Product Images

---



Western Blot analysis of NIH-3T3 cells using TG1019 Polyclonal Antibody.