

PACO01558

Product Information

Size:

50ug

Reactivity:

Human

Source:

Rabbit

Isotype:

IgG

Applications:

ELISA, WB

Recommended dilutions:

WB:1:500-1:2000

Protein Background:**Gene ID:**

SFSWAP

Uniprot

Q12872

Synonyms:

SFSWAP; SFRS8; SWAP; Splicing factor, suppressor of white-apricot homolog; Splicing factor, arginine/serine-rich 8; Suppressor of white apricot protein homolog

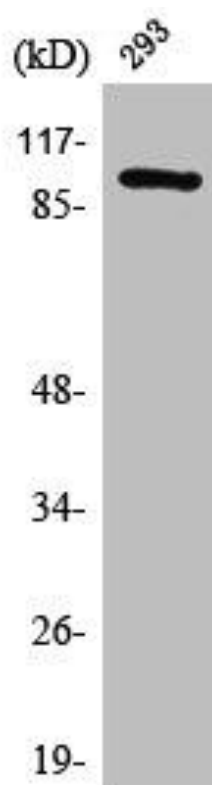
Immunogen:

Synthesized peptide derived from the Internal region of human SWAP.

Storage:

Liquid in PBS containing 50% glycerol, 0.5% BSA and 0.02% sodium azide.

Product Images



Western Blot analysis of 293 cells using SWAP Polyclonal Antibody.