

ZSCAN26 Antibody



PACO01540

Product Information

Size:

50ug

Reactivity:

Human

Source:

Rabbit

Isotype:

IgG

Applications:

ELISA, WB, IF

Recommended dilutions:

WB:1:500-1:2000, IF:1:200-1:1000

Protein Background:

Gene ID:

ZSCAN26

Uniprot

Q16670

Synonyms:

ZNF187; ZSCAN26; Zinc finger protein 187; Protein SRE-ZBP; Zinc finger and SCAN domain-containing protein 26

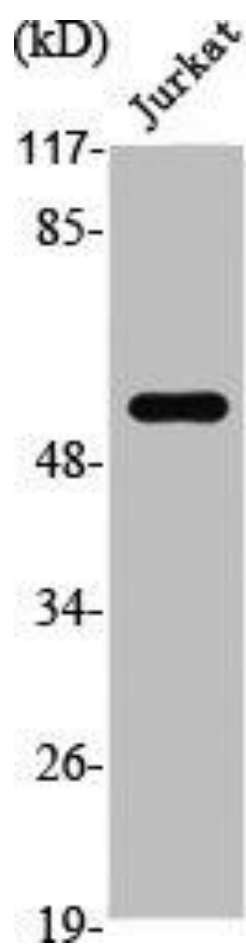
Immunogen:

Synthesized peptide derived from the Internal region of human SRE-ZBP.

Storage:

Liquid in PBS containing 50% glycerol, 0.5% BSA and 0.02% sodium azide.

Product Images



Western Blot analysis of Jurkat cells using SRE-ZBP Polyclonal Antibody.