

SKIL Antibody



PACO01520

Product Information

Size:

50ug

Reactivity:

Human, Mouse

Source:

Rabbit

Isotype:

IgG

Applications:

ELISA, WB, IHC

Recommended dilutions:

WB:1:500-1:2000, IHC:1:100-1:300

Protein Background:**Gene ID:**

SKIL

Uniprot

P12757

Synonyms:

SKIL; SNO; Ski-like protein; Ski-related oncogene; Ski-related protein

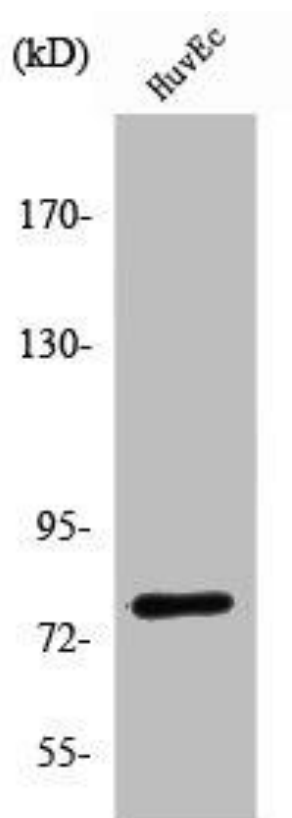
Immunogen:

Synthesized peptide derived from the C-terminal region of human SnoN.

Storage:

Liquid in PBS containing 50% glycerol, 0.5% BSA and 0.02% sodium azide.

Product Images



Western Blot analysis of Jurkat cells using SnoN Polyclonal Antibody.