

SENP1 Antibody



PACO01480

Product Information

Size:

50ug

Reactivity:

Human, Mouse

Source:

Rabbit

Isotype:

IgG

Applications:

ELISA, WB, IHC

Recommended dilutions:

WB:1:500-1:2000, IHC:1:100-1:300

Protein Background:

Gene ID:

SENP1

Uniprot

Q9P0U3

Synonyms:

SENP1; Sentrin-specific protease 1; Sentrin/SUMO-specific protease SENP1

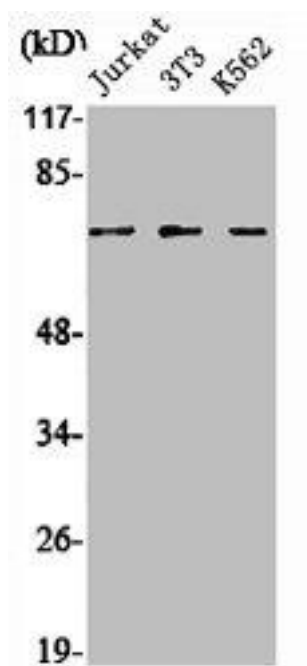
Immunogen:

Synthesized peptide derived from the N-terminal region of human SENP1.

Storage:

Liquid in PBS containing 50% glycerol, 0.5% BSA and 0.02% sodium azide.

Product Images



Western Blot analysis of Jurkat NIH-3T3 K562 cells using SENP1 Polyclonal Antibody.