

# SCAF1 Antibody



PACO01473

---

## Product Information

**Size:**

50ug

**Reactivity:**

Human, Mouse

**Source:**

Rabbit

**Isotype:**

IgG

**Applications:**

ELISA, WB

**Recommended dilutions:**

WB:1:500-1:2000

**Protein Background:****Gene ID:**

SCAF1

**Uniprot**

Q9H7N4

**Synonyms:**

SCAF1; SFRS19; SRA1; Splicing factor; arginine/serine-rich 19; SR-related and CTD-associated factor 1; SR-related-CTD-associated factor; SCAF; Serine arginine-rich pre-mRNA splicing factor SR-A1; SR-A1

**Immunogen:**

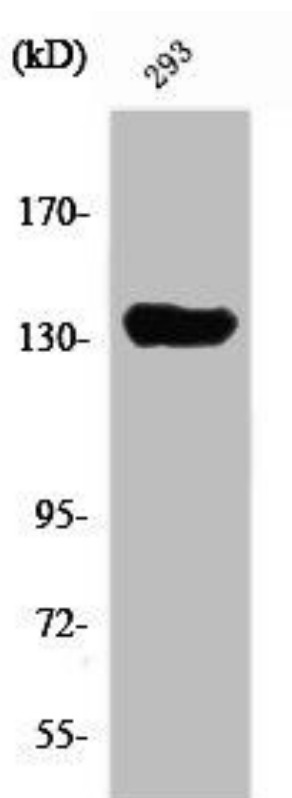
Synthesized peptide derived from the N-terminal region of human SCAF1.

**Storage:**

Liquid in PBS containing 50% glycerol, 0.5% BSA and 0.02% sodium azide.

## Product Images

---



Western Blot analysis of Jurkat cells using SCAF1 Polyclonal Antibody.