

PACO01472

---

## Product Information

**Size:**

50ug

**Reactivity:**

Human, Mouse

**Source:**

Rabbit

**Isotype:**

IgG

**Applications:**

ELISA, WB, IHC

**Recommended dilutions:**

WB:1:500-1:2000, IHC:1:100-1:300

**Protein Background:****Gene ID:**

SGCB

**Uniprot**

Q16585

**Synonyms:**

SGCB; Beta-sarcoglycan; Beta-SG; 43 kDa dystrophin-associated glycoprotein; 43DAG; A3b

**Immunogen:**

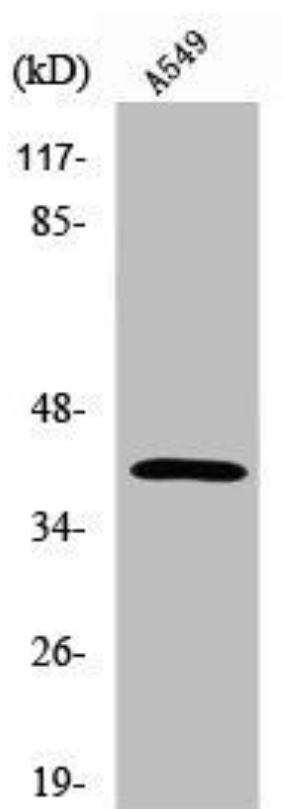
Synthesized peptide derived from the Internal region of human Sarcoglycan-Beta.

**Storage:**

Liquid in PBS containing 50% glycerol, 0.5% BSA and 0.02% sodium azide.

## Product Images

---



Western Blot analysis of A549 cells using Sarcoglycan-Beta Polyclonal Antibody.