

KHDRBS1 Antibody



PACO01469

Product Information

Size:

50ug

Reactivity:

Human, Mouse, Rat

Source:

Rabbit

Isotype:

IgG

Applications:

ELISA, WB

Recommended dilutions:

WB:1:500-1:2000

Protein Background:**Gene ID:**

KHDRBS1

Uniprot

Q07666

Synonyms:

KHDRBS1; SAM68; KH domain-containing; RNA-binding, signal transduction-associated protein 1; GAP-associated tyrosine phosphoprotein p62; Src-associated in mitosis 68 kDa protein; Sam68; p21 Ras GTPase-activating protein-associated p62; p68

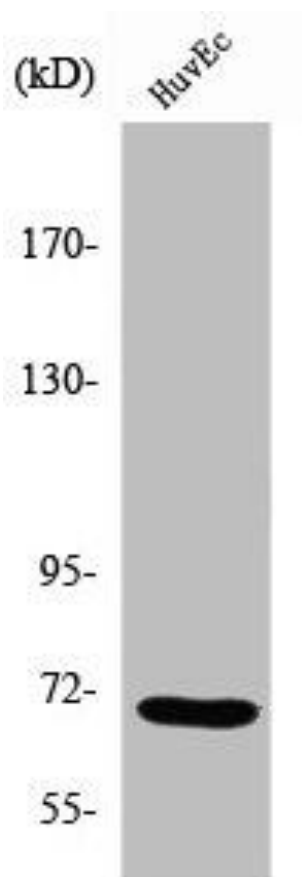
Immunogen:

Synthesized peptide derived from the Internal region of human Sam 68.

Storage:

Liquid in PBS containing 50% glycerol, 0.5% BSA and 0.02% sodium azide.

Product Images



Western Blot analysis of COLO205 cells using Sam 68 Polyclonal Antibody.