

PEBP1 Antibody



PACO01455

Product Information

Size:

50ug

Reactivity:

Human

Source:

Rabbit

Isotype:

IgG

Applications:

ELISA, WB

Recommended dilutions:

WB:1:500-1:2000

Protein Background:

Gene ID:

PEBP1

Uniprot

P30086

Synonyms:

PEBP1; PBP; PEBP; Phosphatidylethanolamine-binding protein 1; PEBP-1; HCNPPp; Neuropolypeptide h3; Prostatic-binding protein; Raf kinase inhibitor protein; RKIP

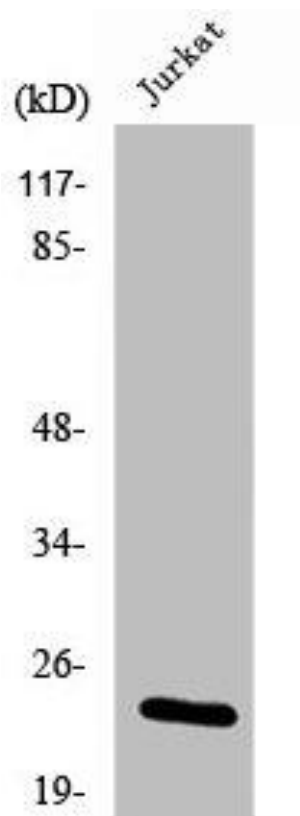
Immunogen:

Synthesized peptide derived from the Internal region of human RKIP.

Storage:

Liquid in PBS containing 50% glycerol, 0.5% BSA and 0.02% sodium azide.

Product Images



Western Blot analysis of K562 cells using RKIP Polyclonal Antibody.