

RPS27L Antibody



PACO01449

Product Information

Size:

50ug

Reactivity:

Human, Mouse

Source:

Rabbit

Isotype:

IgG

Applications:

ELISA, WB, IHC

Recommended dilutions:

WB:1:500-1:2000, IHC:1:100-1:300

Protein Background:

Gene ID:

RPS27L

Uniprot

Q71UM5

Synonyms:

RPS27L; 40S ribosomal protein S27-like

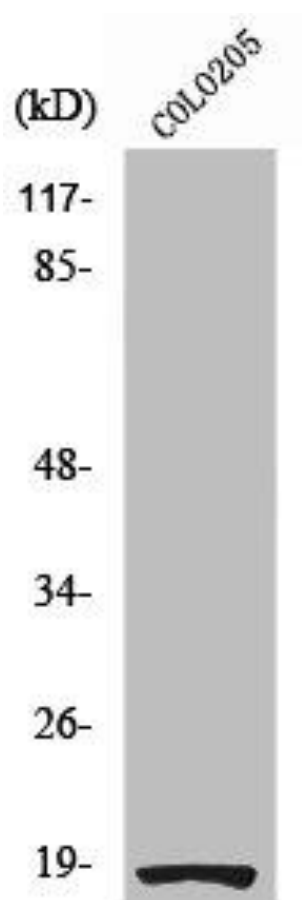
Immunogen:

Synthesized peptide derived from the N-terminal region of human Ribosomal Protein S27L.

Storage:

Liquid in PBS containing 50% glycerol, 0.5% BSA and 0.02% sodium azide.

Product Images



Western Blot analysis of COLO205 cells using Ribosomal Protein S27L Polyclonal Antibody.