

# RPS12 Antibody



PACO01447

---

## Product Information

**Size:**

50ug

**Reactivity:**

Human, Mouse, Rat

**Source:**

Rabbit

**Isotype:**

IgG

**Applications:**

ELISA, WB, IHC, IF

**Recommended dilutions:**

WB:1:500-1:2000, IHC:1:100-1:300,  
IF:1:200-1:1000

**Protein Background:**

**Gene ID:**

RPS12

**Uniprot**

P25398

**Synonyms:**

RPS12; 40S ribosomal protein S12

**Immunogen:**

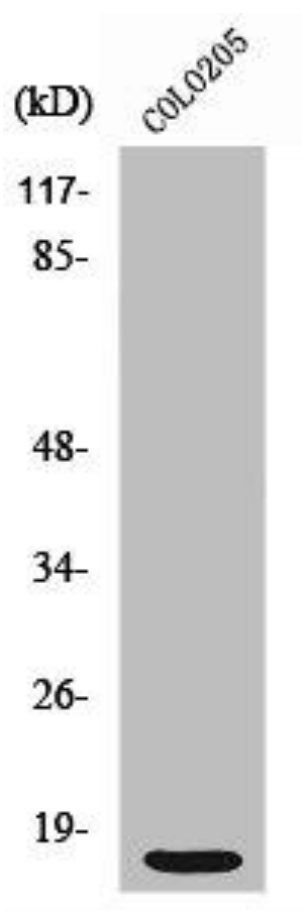
Synthesized peptide derived from the C-terminal region of human Ribosomal Protein S12.

**Storage:**

Liquid in PBS containing 50% glycerol, 0.5% BSA and 0.02% sodium azide.

## Product Images

---



Western Blot analysis of COLO205 cells using Ribosomal Protein S12 Polyclonal Antibody.