

# RPL34 Antibody



PACO01443

---

## Product Information

**Size:**

50ug

**Reactivity:**

Human, Mouse, Rat

**Source:**

Rabbit

**Isotype:**

IgG

**Applications:**

ELISA, WB, IHC, IF

**Recommended dilutions:**

WB:1:500-1:2000, IHC:1:100-1:300,  
IF:1:200-1:1000

**Protein Background:****Gene ID:**

RPL34

**Uniprot**

P49207

**Synonyms:**

RPL34; 60S ribosomal protein L34

**Immunogen:**

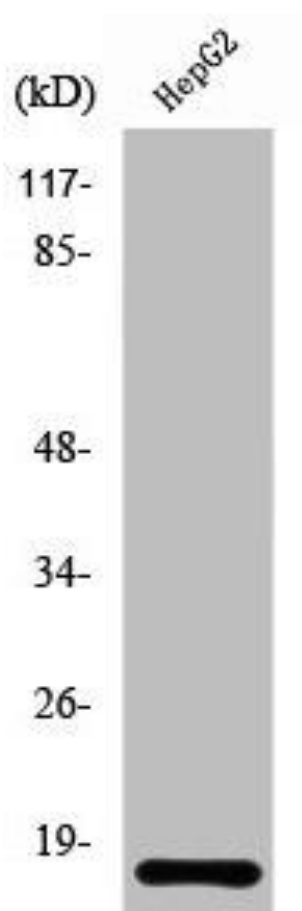
Synthesized peptide derived from the Internal region of human Ribosomal Protein L34.

**Storage:**

Liquid in PBS containing 50% glycerol, 0.5% BSA and 0.02% sodium azide.

## Product Images

---



Western Blot analysis of HuvEc cells using Ribosomal Protein L34 Polyclonal Antibody.