

# RHO Antibody



PACO01432

---

## Product Information

**Size:**

50ug

**Reactivity:**

Human, Mouse, Rat

**Source:**

Rabbit

**Isotype:**

IgG

**Applications:**

ELISA, WB

**Recommended dilutions:**

WB:1:500-1:2000

**Protein Background:**

**Gene ID:**

RHO

**Uniprot**

P08100

**Synonyms:**

RHO; OPN2; Rhodopsin; Opsin-2

**Immunogen:**

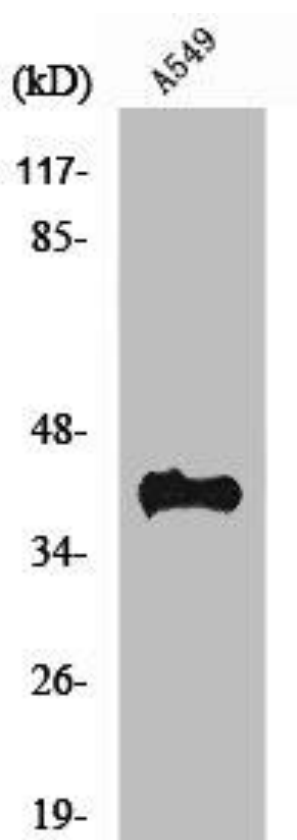
Synthesized peptide derived from the Internal region of human Rhodopsin.

**Storage:**

Liquid in PBS containing 50% glycerol, 0.5% BSA and 0.02% sodium azide.

## Product Images

---



Western Blot analysis of A549 cells using Rhodopsin Polyclonal Antibody.