

# ARHGDIG Antibody



PACO01430

---

## Product Information

**Size:**

50ug

**Reactivity:**

Human

**Source:**

Rabbit

**Isotype:**

IgG

**Applications:**

ELISA, WB

**Recommended dilutions:**

WB:1:500-1:2000

**Protein Background:**

**Gene ID:**

ARHGDIG

**Uniprot**

Q99819

**Synonyms:**

ARHGDIG; Rho GDP-dissociation inhibitor 3; Rho GDI 3; Rho-GDI gamma

**Immunogen:**

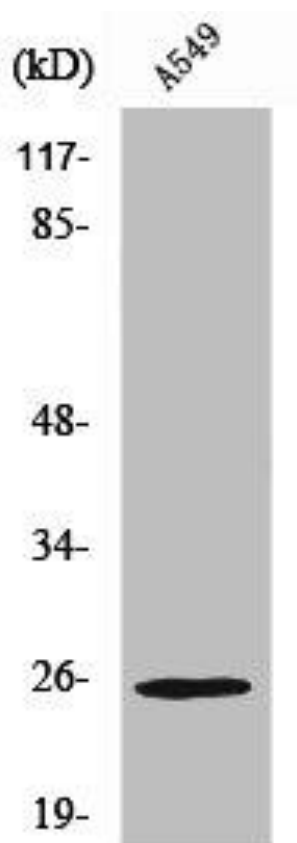
Synthesized peptide derived from the Internal region of human Rho GDIgamma.

**Storage:**

Liquid in PBS containing 50% glycerol, 0.5% BSA and 0.02% sodium azide.

## Product Images

---



Western Blot analysis of Jurkat cells using Rho GDIgamma Polyclonal Antibody.