

RGS10 Antibody



PACO01427

Product Information

Size:

50ug

Reactivity:

Human, Mouse, Rat

Source:

Rabbit

Isotype:

IgG

Applications:

ELISA, WB, IHC

Recommended dilutions:

WB:1:500-1:2000, IHC:1:100-1:300

Protein Background:

Gene ID:

RGS10

Uniprot

O43665

Synonyms:

RGS10; Regulator of G-protein signaling 10; RGS10

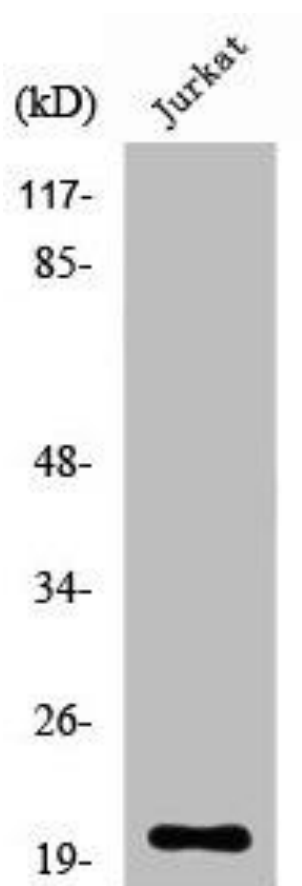
Immunogen:

Synthesized peptide derived from the Internal region of human RGS10.

Storage:

Liquid in PBS containing 50% glycerol, 0.5% BSA and 0.02% sodium azide.

Product Images



Western Blot analysis of Jurkat cells using RGS10 Polyclonal Antibody.