

# RAF1 Antibody



PACO01399

---

## Product Information

**Size:**

50ug

**Reactivity:**

Human, Mouse, Rat

**Source:**

Rabbit

**Isotype:**

IgG

**Applications:**

ELISA, WB

**Recommended dilutions:**

WB:1:500-1:2000

**Protein Background:****Gene ID:**

RAF1

**Uniprot**

P04049

**Synonyms:**

RAF1; RAF; RAF proto-oncogene serine/threonine-protein kinase; Proto-oncogene c-RAF; cRaf; Raf-1

**Immunogen:**

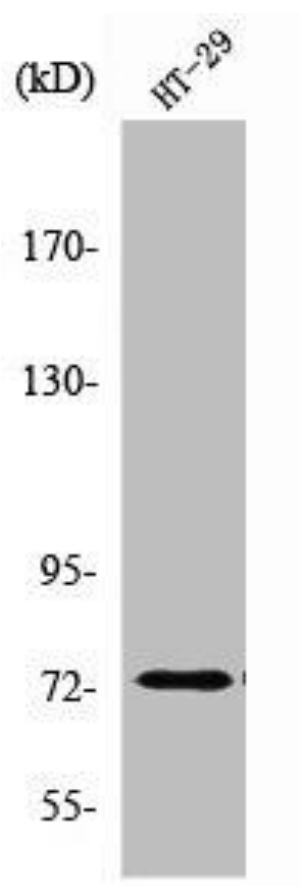
Synthesized peptide derived from human Raf-1 around the non-phosphorylation site of Y341.

**Storage:**

Liquid in PBS containing 50% glycerol, 0.5% BSA and 0.02% sodium azide.

## Product Images

---



Western Blot analysis of HT29 cells using Raf-1 Polyclonal Antibody.