

# RAD51C Antibody



PACO01396

---

## Product Information

**Size:**

50ug

**Reactivity:**

Human, Monkey

**Source:**

Rabbit

**Isotype:**

IgG

**Applications:**

ELISA, WB, IHC, IF

**Recommended dilutions:**

WB:1:500-1:2000, IHC:1:100-1:300,  
IF:1:200-1:1000

**Protein Background:**

**Gene ID:**

RAD51C

**Uniprot**

O43502

**Synonyms:**

RAD51C; RAD51L2; DNA repair protein RAD51 homolog 3; R51H3; RAD51 homolog C;  
RAD51-like protein 2

**Immunogen:**

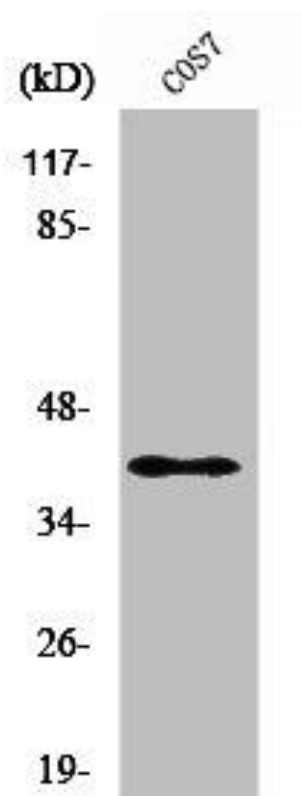
Synthesized peptide derived from the Internal region of human Rad51C.

**Storage:**

Liquid in PBS containing 50% glycerol, 0.5% BSA and 0.02% sodium azide.

## Product Images

---



Western Blot analysis of COS7 cells using Rad51C Polyclonal Antibody.