

# RPH3A Antibody



PACO01390

---

## Product Information

**Size:**

50ug

**Reactivity:**

Human, Mouse, Rat

**Source:**

Rabbit

**Isotype:**

IgG

**Applications:**

ELISA, WB, IHC, IF

**Recommended dilutions:**

WB:1:500-1:2000, IHC:1:100-1:300,  
IF:1:200-1:1000

**Protein Background:****Gene ID:**

RPH3A

**Uniprot**

Q9Y2J0

**Synonyms:**

RPH3A; KIAA0985; Rabphilin-3A; Exophilin-1

**Immunogen:**

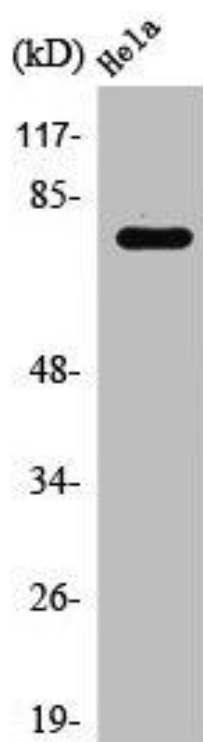
Synthesized peptide derived from human Rabphilin-3A around the non-phosphorylation site of S237.

**Storage:**

Liquid in PBS containing 50% glycerol, 0.5% BSA and 0.02% sodium azide.

## Product Images

---



Western Blot analysis of HeLa cells using Rabphilin-3A Polyclonal Antibody.