

RAB6C Antibody



PACO01385

Product Information

Size:

50ug

Reactivity:

Human, Mouse, Rat

Source:

Rabbit

Isotype:

IgG

Applications:

ELISA, WB

Recommended dilutions:

WB:1:500-1:2000

Protein Background:

Gene ID:

RAB6C

Uniprot

Q9H0N0

Synonyms:

RAB6C; WTH3; Ras-related protein Rab-6C; Rab6-like protein WTH3

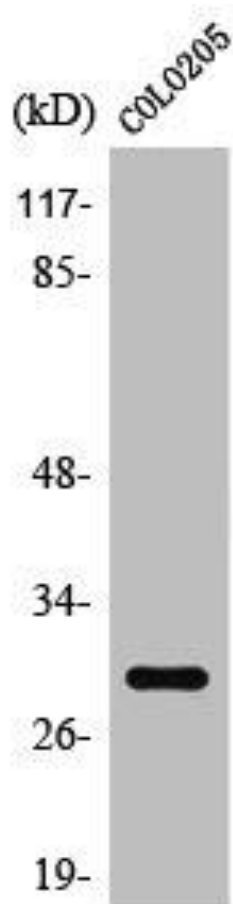
Immunogen:

Synthesized peptide derived from the Internal region of human Rab 6C.

Storage:

Liquid in PBS containing 50% glycerol, 0.5% BSA and 0.02% sodium azide.

Product Images



Western Blot analysis of COLO205 cells using Rab 6C Polyclonal Antibody.