

# ARHGEF11 Antibody



PACO01314

---

## Product Information

**Size:**

50ug

**Reactivity:**

Human, Mouse, Rat

**Source:**

Rabbit

**Isotype:**

IgG

**Applications:**

ELISA, WB

**Recommended dilutions:**

WB:1:500-1:2000

**Protein Background:****Gene ID:**

ARHGEF11

**Uniprot**

O15085

**Synonyms:**

ARHGEF11; KIAA0380; Rho guanine nucleotide exchange factor 11; PDZ-RhoGEF

**Immunogen:**

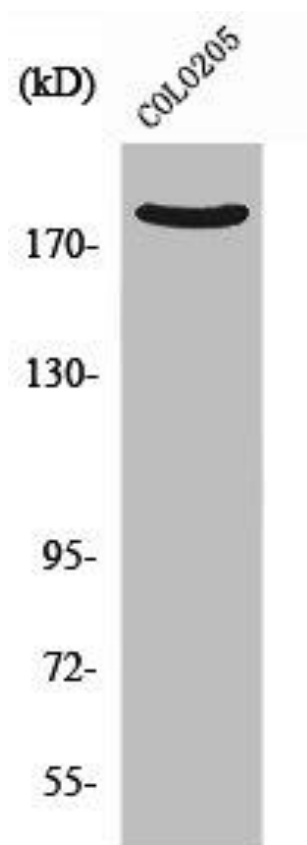
Synthesized peptide derived from the N-terminal region of human PDZ-RhoGEF.

**Storage:**

Liquid in PBS containing 50% glycerol, 0.5% BSA and 0.02% sodium azide.

## Product Images

---



Western Blot analysis of COLO205 cells using PDZ-RhoGEF Polyclonal Antibody.