

EP300 Antibody



PACO01284

Product Information

Size:

50ug

Reactivity:

Human

Source:

Rabbit

Isotype:

IgG

Applications:

ELISA, WB, IHC

Recommended dilutions:

WB:1:500-1:2000, IHC:1:100-1:300

Protein Background:

Gene ID:

EP300

Uniprot

Q09472

Synonyms:

EP300; P300; Histone acetyltransferase p300; p300 HAT; E1A-associated protein p300

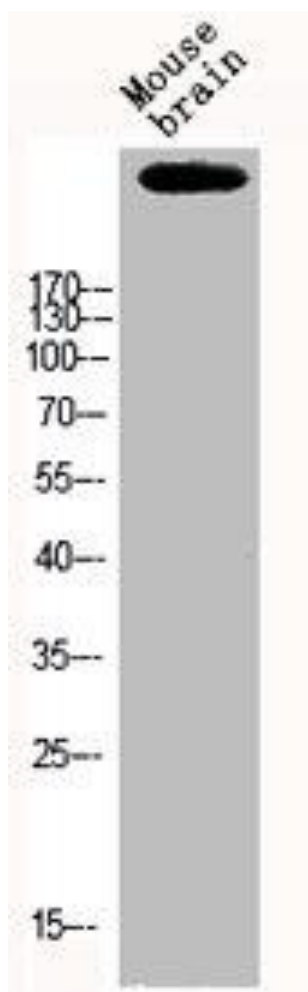
Immunogen:

Synthesized peptide derived from the N-terminal region of human p300.

Storage:

Liquid in PBS containing 50% glycerol, 0.5% BSA and 0.02% sodium azide.

Product Images



Western Blot analysis of MOUSE-BRAIN cells using p300 Polyclonal Antibody.