

# CDKN2A Antibody



PACO01276

---

## Product Information

**Size:**

50ug

**Reactivity:**

Human

**Source:**

Rabbit

**Isotype:**

IgG

**Applications:**

ELISA, WB, IHC, IF

**Recommended dilutions:**

WB:1:500-1:2000, IHC:1:100-1:300,  
IF:1:200-1:1000

**Protein Background:**

**Gene ID:**

CDKN2A

**Uniprot**

Q8N726

**Synonyms:**

CDKN2A; CDKN2; MLM; Cyclin-dependent kinase inhibitor 2A; isoform 4; p14ARF; p19ARF

**Immunogen:**

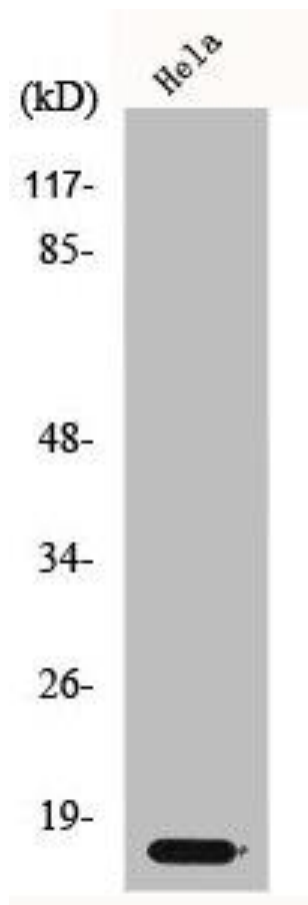
Synthesized peptide derived from the Internal region of human p14.

**Storage:**

Liquid in PBS containing 50% glycerol, 0.5% BSA and 0.02% sodium azide.

## Product Images

---



Western Blot analysis of HeLa cells using p14 Polyclonal Antibody.