

OR7A10 Antibody



PACO01258

Product Information

Size:

50ug

Reactivity:

Human, Monkey

Source:

Rabbit

Isotype:

IgG

Applications:

ELISA, WB

Recommended dilutions:

WB:1:500-1:2000

Protein Background:

Gene ID:

OR7A10

Uniprot

O76100

Synonyms:

OR7A10; Olfactory receptor 7A10; OST027; Olfactory receptor OR19-18

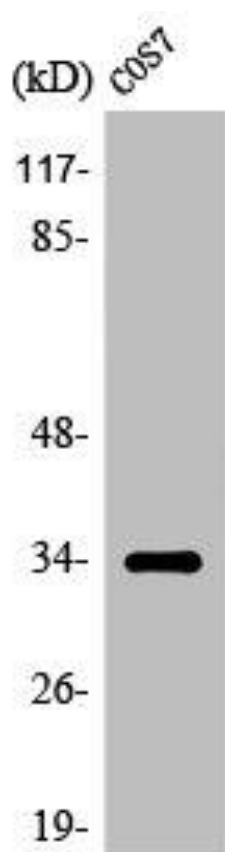
Immunogen:

Synthesized peptide derived from the C-terminal region of human Olfactory receptor 7A10.

Storage:

Liquid in PBS containing 50% glycerol, 0.5% BSA and 0.02% sodium azide.

Product Images



Western Blot analysis of COS7 cells using Olfactory receptor 7A10 Polyclonal Antibody.