

# OR2A25 Antibody



PACO01217

---

## Product Information

**Size:**

50ug

**Reactivity:**

Human

**Source:**

Rabbit

**Isotype:**

IgG

**Applications:**

ELISA, WB, IF

**Recommended dilutions:**

WB:1:500-1:2000, IF:1:200-1:1000

**Protein Background:**

**Gene ID:**

OR2A25

**Uniprot**

A4D2G3

**Synonyms:**

OR2A25; OR2A25P; OR2A27; Olfactory receptor 2A25; Olfactory receptor 2A27

**Immunogen:**

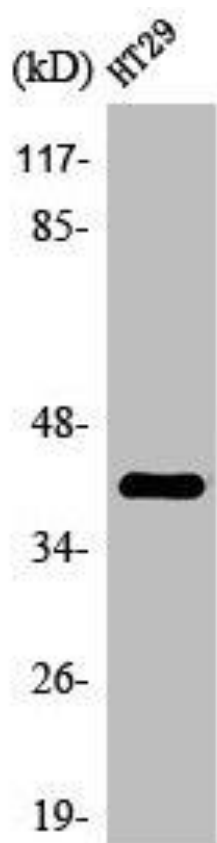
Synthesized peptide derived from the C-terminal region of human Olfactory receptor 2A25.

**Storage:**

Liquid in PBS containing 50% glycerol, 0.5% BSA and 0.02% sodium azide.

## Product Images

---



Western Blot analysis of HT29 cells using Olfactory receptor 2A5 Polyclonal Antibody.