

OR10R2 Antibody



PACO01208

Product Information

Size:

50ug

Reactivity:

Human

Source:

Rabbit

Isotype:

IgG

Applications:

ELISA, WB, IF

Recommended dilutions:

WB:1:500-1:2000, IF:1:200-1:1000

Protein Background:**Gene ID:**

OR10R2

Uniprot

Q8NGX6

Synonyms:

OR10R2; Olfactory receptor 10R2; Olfactory receptor OR1-8

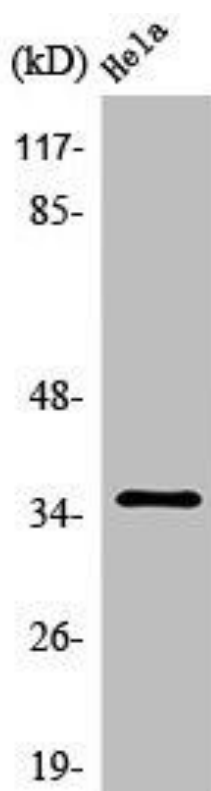
Immunogen:

Synthesized peptide derived from the C-terminal region of human Olfactory receptor 10R2.

Storage:

Liquid in PBS containing 50% glycerol, 0.5% BSA and 0.02% sodium azide.

Product Images



Western Blot analysis of HeLa cells using Olfactory receptor 10R2 Polyclonal Antibody.