

PACO01191

---

## Product Information

**Size:**

50ug

**Reactivity:**

Human

**Source:**

Rabbit

**Isotype:**

IgG

**Applications:**

ELISA, WB, IHC

**Recommended dilutions:**

WB:1:500-1:2000, IHC:1:100-1:300

**Protein Background:**

**Gene ID:**

NTPCR

**Uniprot**

Q9BSD7

**Synonyms:**

NTPCR; C1orf57; Cancer-related nucleoside-triphosphatase; NTPase; Nucleoside triphosphate phosphohydrolase

**Immunogen:**

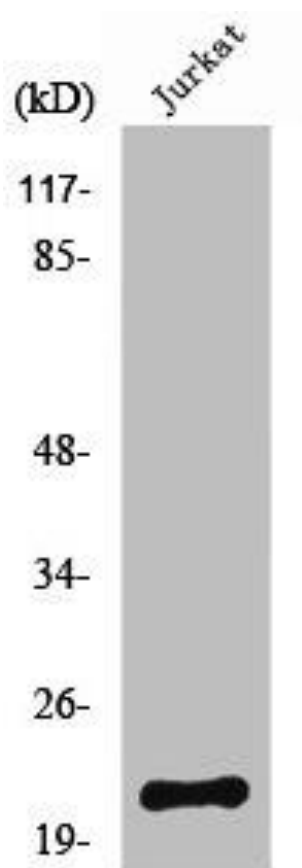
Synthesized peptide derived from the C-terminal region of human NTPase.

**Storage:**

Liquid in PBS containing 50% glycerol, 0.5% BSA and 0.02% sodium azide.

## Product Images

---



Western Blot analysis of COLO205 cells using NTPase Polyclonal Antibody.