

# NBPF7 Antibody



PACO01142

---

## Product Information

**Size:**

50ug

**Reactivity:**

Human

**Source:**

Rabbit

**Isotype:**

IgG

**Applications:**

ELISA, WB

**Recommended dilutions:**

WB:1:500-1:2000

**Protein Background:**

**Gene ID:**

NBPF7

**Uniprot**

P0C2Y1

**Synonyms:**

NBPF7; Putative neuroblastoma breakpoint family member 7

**Immunogen:**

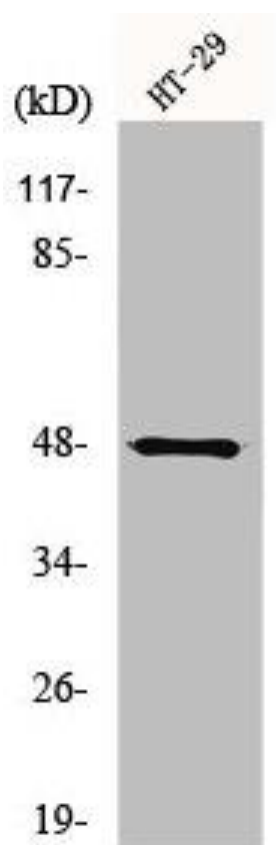
Synthesized peptide derived from the C-terminal region of human NBPF7.

**Storage:**

Liquid in PBS containing 50% glycerol, 0.5% BSA and 0.02% sodium azide.

## Product Images

---



Western Blot analysis of HepG2 cells using NBPF7 Polyclonal Antibody.