

**NBPF1/NBPF9/NBPF10/NBPF12/NBPF14/NBPF15  
/NBPF16/NBPF20 Antibody**  
PACO01141



---

**Product Information**

**Size:**

50ug

**Reactivity:**

Human

**Source:**

Rabbit

**Isotype:**

IgG

**Applications:**

ELISA, WB, IHC

**Recommended dilutions:**

WB:1:500-1:2000, IHC:1:100-1:300

**Protein Background:**

**Gene ID:**

NBPF12/NBPF10/NBPF1/NBPF9/NBPF20/NBPF15/NBPF14

**Uniprot**

Q5TAG4/Q6P3W6/Q5SXJ2/Q3BBV0/Q3BBW0/Q3BBV1/Q8N660/Q5TI25

**Synonyms:**

NBPF12; COAS1; KIAA1245; Neuroblastoma breakpoint family member 12; Chromosome 1 amplified sequence 1; NBPF10; Neuroblastoma breakpoint family member 10; NBPF16; Neuroblastoma breakpoint family member 16; NBPF1; KIAA1693; Neuroblastoma brea

**Immunogen:**

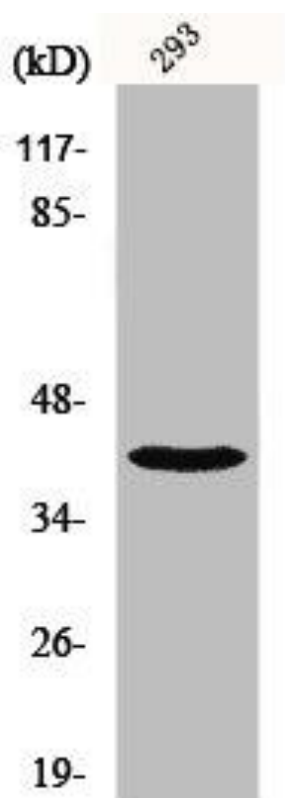
Synthesized peptide derived from the C-terminal region of human NBPF1/9/10/12/14/15/16/20.

**Storage:**

Liquid in PBS containing 50% glycerol, 0.5% BSA and 0.02% sodium azide.

## Product Images

---



Western Blot analysis of 293 cells using NBPF1/9/10/12/14/15/16/20 Polyclonal Antibody.