

# SCN9A Antibody



PACO01132

---

## Product Information

**Size:**

50ug

**Reactivity:**

Human, Mouse, Rat

**Source:**

Rabbit

**Isotype:**

IgG

**Applications:**

ELISA, WB, IHC

**Recommended dilutions:**

WB:1:500-1:2000, IHC:1:100-1:300

**Protein Background:**

**Gene ID:**

SCN9A

**Uniprot**

Q15858

**Synonyms:**

SCN9A; NENA; Sodium channel protein type 9 subunit alpha; Neuroendocrine sodium channel; hNE-Na; Peripheral sodium channel 1; PN1; Sodium channel protein type IX subunit alpha; Voltage-gated sodium channel subunit alpha Nav1.7

**Immunogen:**

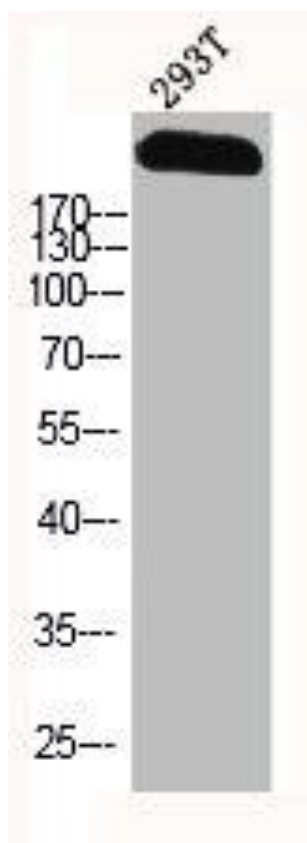
Synthesized peptide derived from the Internal region of human Na<sup>+</sup> CP type IXalpha.

**Storage:**

Liquid in PBS containing 50% glycerol, 0.5% BSA and 0.02% sodium azide.

## Product Images

---



Western Blot analysis of 293T cells using Na<sup>+</sup> CP type IXalpha Polyclonal Antibody.