

YBX2 Antibody



PACO01116

Product Information

Size:

50ug

Reactivity:

Human, Mouse

Source:

Rabbit

Isotype:

IgG

Applications:

ELISA, WB, IHC, IF

Recommended dilutions:

WB:1:500-1:2000, IHC:1:100-1:300,
IF:1:200-1:1000

Protein Background:

Gene ID:

YBX2

Uniprot

Q9Y2T7

Synonyms:

YBX2; CSDA3; MSY2; Y-box-binding protein 2; Contrin; DNA-binding protein C; Dbpc;
Germ cell-specific Y-box-binding protein; MSY2 homolog

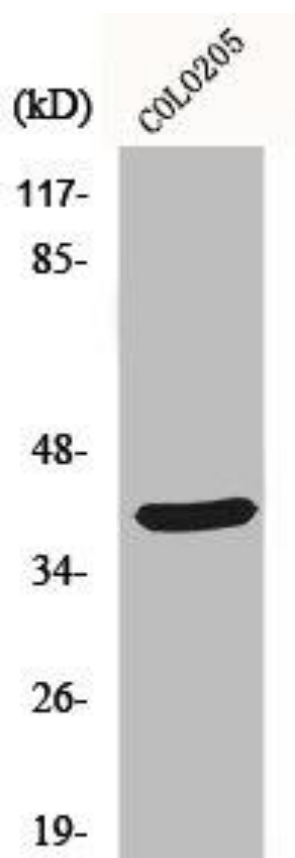
Immunogen:

Synthesized peptide derived from the C-terminal region of human MSY2.

Storage:

Liquid in PBS containing 50% glycerol, 0.5% BSA and 0.02% sodium azide.

Product Images



Western Blot analysis of COLO205 cells using MSY2 Polyclonal Antibody.