

# STK24 Antibody



PACO01115

---

## Product Information

**Size:**

50ug

**Reactivity:**

Human, Mouse, Rat

**Source:**

Rabbit

**Isotype:**

IgG

**Applications:**

ELISA, WB, IHC

**Recommended dilutions:**

WB:1:500-1:2000, IHC:1:100-1:300

**Protein Background:**

**Gene ID:**

STK24

**Uniprot**

Q9Y6E0

**Synonyms:**

STK24; MST3; STK3; Serine/threonine-protein kinase 24; Mammalian STE20-like protein kinase 3; MST-3; STE20-like kinase MST3

**Immunogen:**

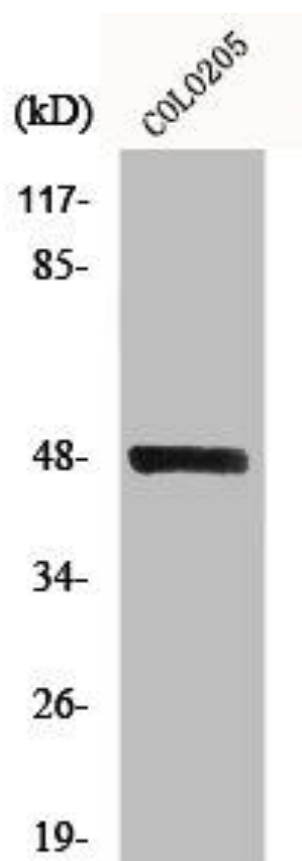
Synthesized peptide derived from the C-terminal region of human MST-3.

**Storage:**

Liquid in PBS containing 50% glycerol, 0.5% BSA and 0.02% sodium azide.

## Product Images

---



Western Blot analysis of COLO205 cells using MST-3 Polyclonal Antibody.