

MRPS27 Antibody



PACO01108

Product Information

Size:

50ug

Reactivity:

Human

Source:

Rabbit

Isotype:

IgG

Applications:

ELISA, WB

Recommended dilutions:

WB:1:500-1:2000

Protein Background:

Gene ID:

MRPS27

Uniprot

Q92552

Synonyms:

MRPS27; KIAA0264; 28S ribosomal protein S27; mitochondrial; MRP-S27; S27mt

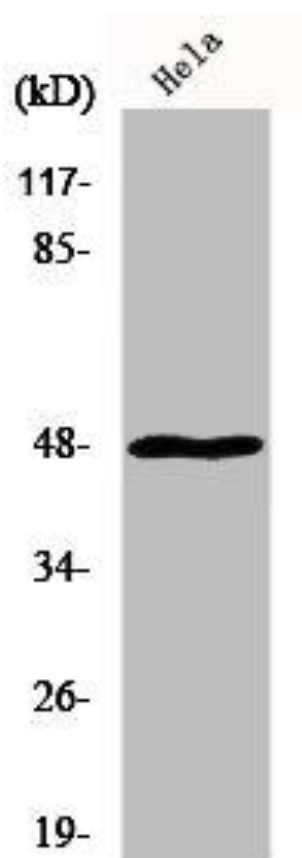
Immunogen:

Synthesized peptide derived from the N-terminal region of human MRP-S27.

Storage:

Liquid in PBS containing 50% glycerol, 0.5% BSA and 0.02% sodium azide.

Product Images



Western Blot analysis of HuvEc cells using MRP-S27 Polyclonal Antibody.