

MRPL46 Antibody



PACO01102

Product Information

Size:

50ug

Reactivity:

Human, Mouse, Rat

Source:

Rabbit

Isotype:

IgG

Applications:

ELISA, WB, IHC

Recommended dilutions:

WB:1:500-1:2000, IHC:1:100-1:300

Protein Background:

Gene ID:

MRPL46

Uniprot

Q9H2W6

Synonyms:

MRPL46; C15orf4; LIECG2; 39S ribosomal protein L46; mitochondrial; L46mt; MRP-L46; P2ECSL

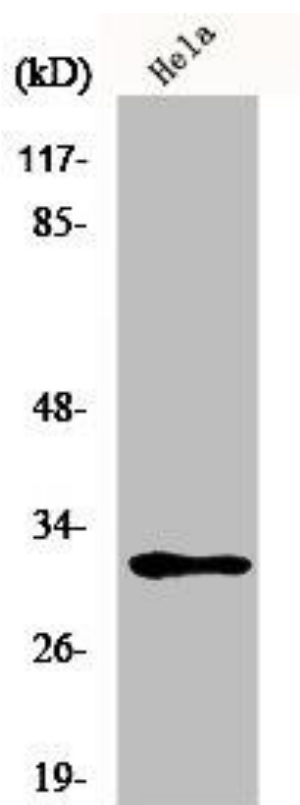
Immunogen:

Synthesized peptide derived from the Internal region of human MRP-L46.

Storage:

Liquid in PBS containing 50% glycerol, 0.5% BSA and 0.02% sodium azide.

Product Images



Western Blot analysis of HeLa cells using MRP-L46 Polyclonal Antibody.