

MRPL41 Antibody



PACO01100

Product Information

Size:

50ug

Reactivity:

Human, Mouse, Rat

Source:

Rabbit

Isotype:

IgG

Applications:

ELISA, WB, IHC

Recommended dilutions:

WB:1:500-1:2000, IHC:1:100-1:300

Protein Background:

Gene ID:

MRPL41

Uniprot

Q8IXM3

Synonyms:

MRPL41; BMRP; MRPL27; RPML27; PIG3; 39S ribosomal protein L41; mitochondrial; L41mt; MRP-L41; 39S ribosomal protein L27 homolog; Bcl-2-interacting mitochondrial ribosomal protein L41; Cell proliferation-inducing gene 3 protein; MRP-L27 homo

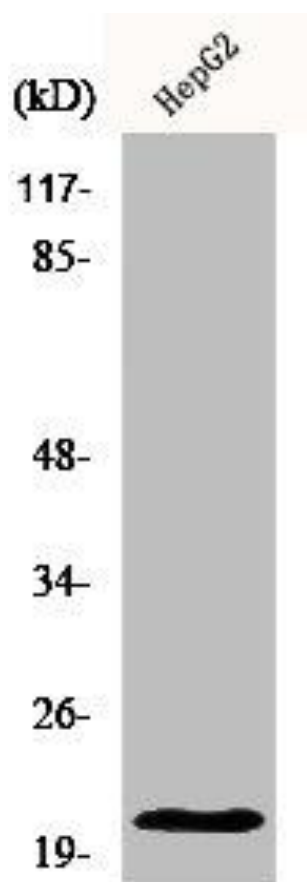
Immunogen:

Synthesized peptide derived from the Internal region of human MRP-L41.

Storage:

Liquid in PBS containing 50% glycerol, 0.5% BSA and 0.02% sodium azide.

Product Images



Western Blot analysis of HepG2 cells using MRP-L41 Polyclonal Antibody.