

# MRPL40 Antibody



PACO01099

---

## Product Information

**Size:**

50ug

**Reactivity:**

Human

**Source:**

Rabbit

**Isotype:**

IgG

**Applications:**

ELISA, WB, IHC

**Recommended dilutions:**

WB:1:500-1:2000, IHC:1:100-1:300

**Protein Background:**

**Gene ID:**

MRPL40

**Uniprot**

Q9NQ50

**Synonyms:**

MRPL40; NLVCF; URIM; 39S ribosomal protein L40; mitochondrial; L40mt; MRP-L40; Nuclear localization signal-containing protein deleted in velocardiofacial syndrome; Up-regulated in metastasis

**Immunogen:**

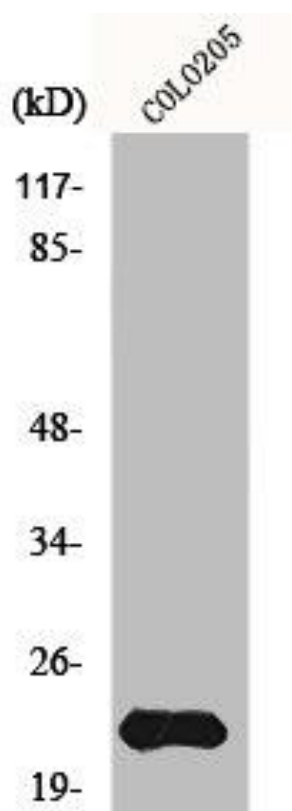
Synthesized peptide derived from the Internal region of human MRP-L40.

**Storage:**

Liquid in PBS containing 50% glycerol, 0.5% BSA and 0.02% sodium azide.

## Product Images

---



Western Blot analysis of COLO205 cells using MRP-L40 Polyclonal Antibody.