

MRPL18 Antibody

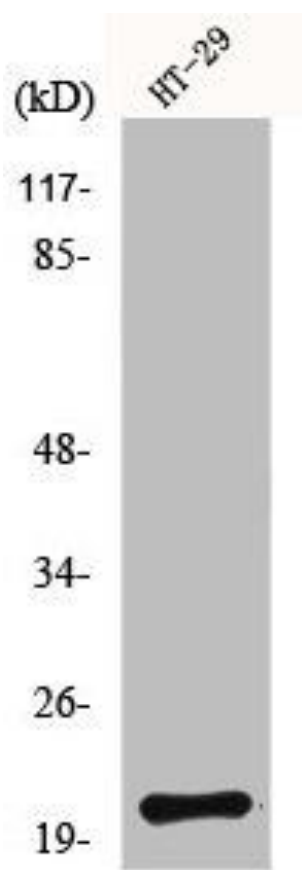


PACO01094

Product Information

Size: 50ug	Protein Background:
Reactivity: Human	Gene ID: MRPL18
Source: Rabbit	Uniprot Q9H0U6
Isotype: IgG	Synonyms: MRPL18; HSPC071; 39S ribosomal protein L18; mitochondrial; L18mt; MRP-L18
Applications: ELISA, WB, IHC	Immunogen: Synthesized peptide derived from the N-terminal region of human MRP-L18.
Recommended dilutions: WB:1:500-1:2000, IHC:1:100-1:300	Storage: Liquid in PBS containing 50% glycerol, 0.5% BSA and 0.02% sodium azide.

Product Images



Western Blot analysis of HT29 cells using MRP-L18 Polyclonal Antibody.