

# MRPL14 Antibody



PACO01091

---

## Product Information

**Size:**

50ug

**Reactivity:**

Human, Mouse, Rat

**Source:**

Rabbit

**Isotype:**

IgG

**Applications:**

ELISA, WB, IHC

**Recommended dilutions:**

WB:1:500-1:2000, IHC:1:100-1:300

**Protein Background:**

**Gene ID:**

MRPL14

**Uniprot**

Q6P1L8

**Synonyms:**

MRPL14; MRPL32; RPML32; 39S ribosomal protein L14; mitochondrial; L14mt; MRP-L14; 39S ribosomal protein L32, mitochondrial; L32mt; MRP-L32

**Immunogen:**

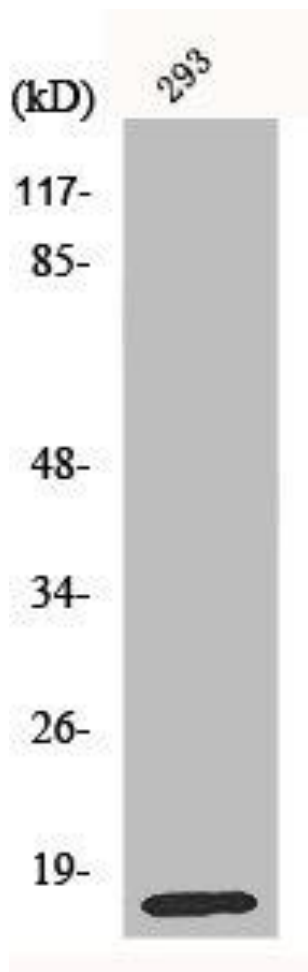
Synthesized peptide derived from the C-terminal region of human MRP-L14.

**Storage:**

Liquid in PBS containing 50% glycerol, 0.5% BSA and 0.02% sodium azide.

## Product Images

---



Western Blot analysis of COLO205 cells using MRP-L14 Polyclonal Antibody.