

MRPL13 Antibody



PACO01090

Product Information

Size:

50ug

Reactivity:

Human, Mouse, Rat

Source:

Rabbit

Isotype:

IgG

Applications:

ELISA, WB, IHC

Recommended dilutions:

WB:1:500-1:2000, IHC:1:100-1:300

Protein Background:

Gene ID:

MRPL13

Uniprot

Q9BYD1

Synonyms:

MRPL13; 39S ribosomal protein L13; mitochondrial; L13mt; MRP-L13

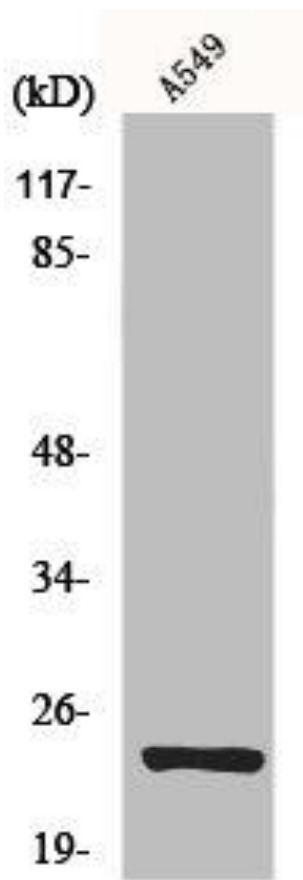
Immunogen:

Synthesized peptide derived from the C-terminal region of human MRP-L13.

Storage:

Liquid in PBS containing 50% glycerol, 0.5% BSA and 0.02% sodium azide.

Product Images



Western Blot analysis of A549 cells using MRP-L13 Polyclonal Antibody.