

MRPL11 Antibody



PACO01088

Product Information

Size:

50ug

Reactivity:

Human, Monkey

Source:

Rabbit

Isotype:

IgG

Applications:

ELISA, WB, IHC, IF

Recommended dilutions:

WB:1:500-1:2000, IHC:1:100-1:300,
IF:1:200-1:1000

Protein Background:

Gene ID:

MRPL11

Uniprot

Q9Y3B7

Synonyms:

MRPL11; CGI-113; 39S ribosomal protein L11; mitochondrial; L11mt; MRP-L11

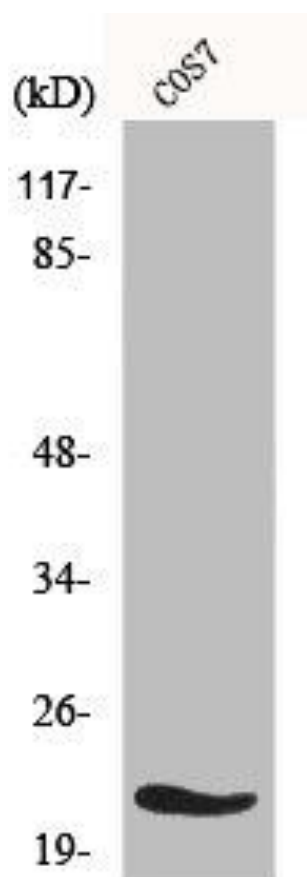
Immunogen:

Synthesized peptide derived from the Internal region of human MRP-L11.

Storage:

Liquid in PBS containing 50% glycerol, 0.5% BSA and 0.02% sodium azide.

Product Images



Western Blot analysis of COS7 cells using MRP-L11 Polyclonal Antibody.